

# Diagnostic optique des Polypes coliques

[www.gastrocochin.com](http://www.gastrocochin.com)

---

Service de gastroentérologie, d'endoscopie et d'oncologie digestive  
Université Paris Descartes

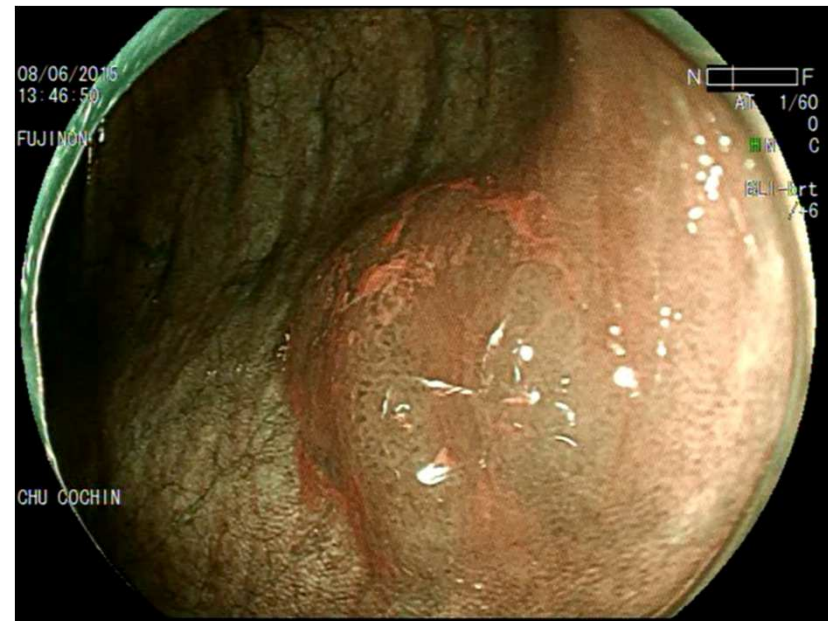
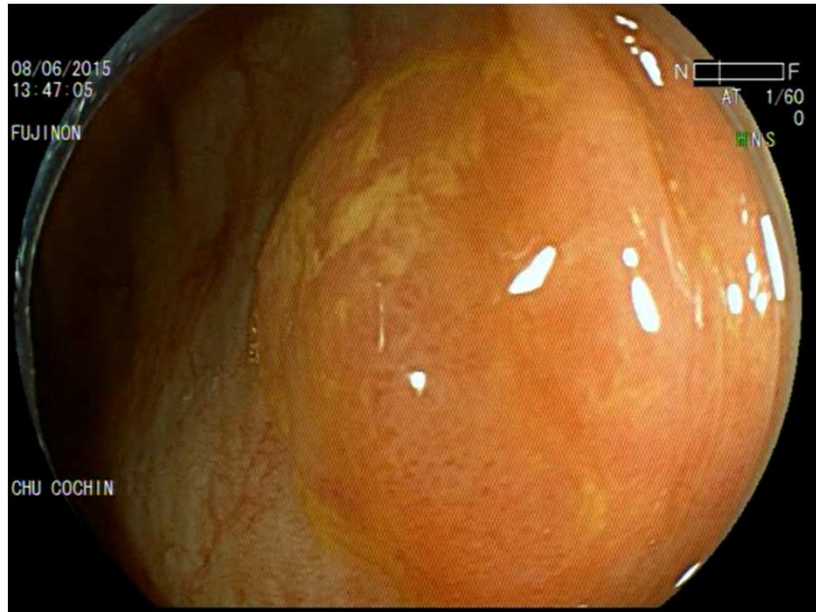
--

Site COCHIN

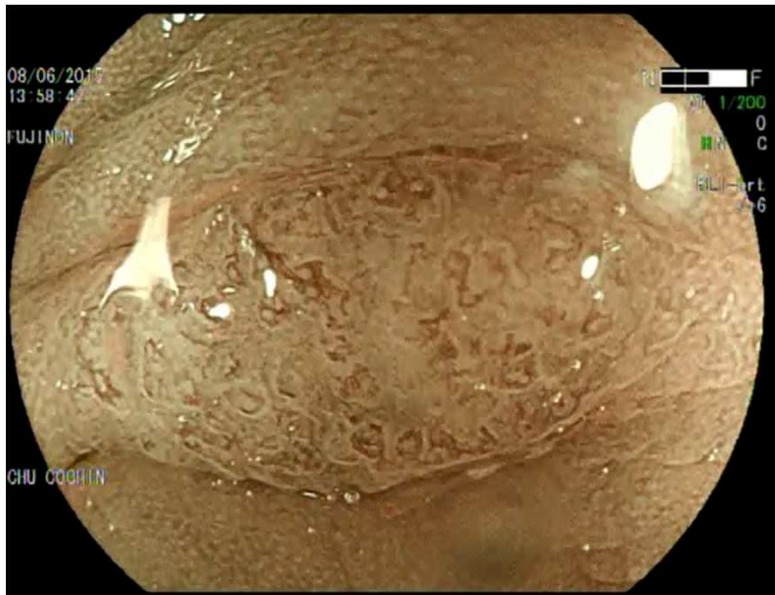
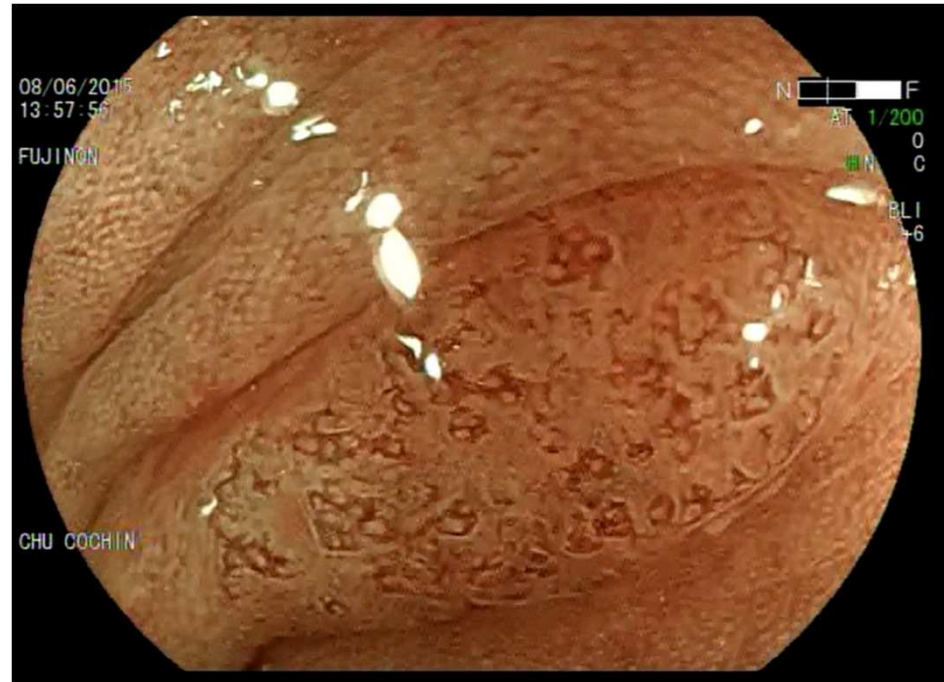
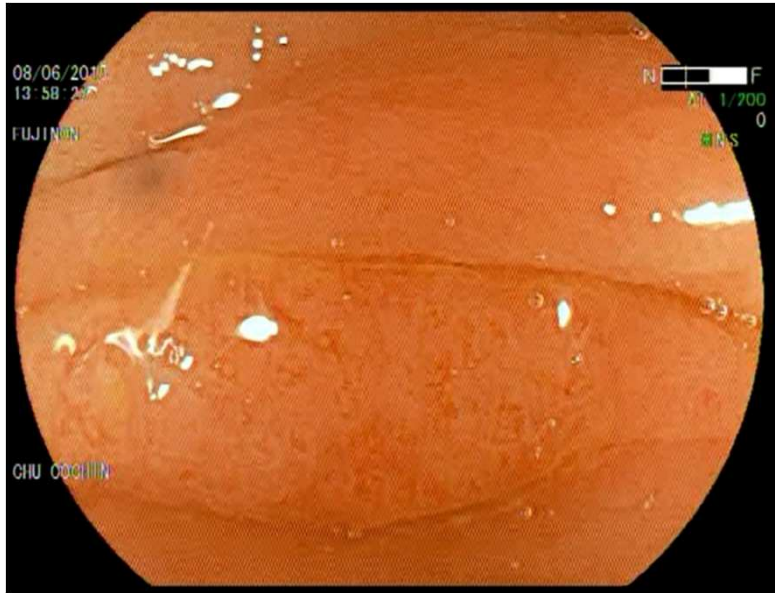
27, rue du Faubourg Saint Jacques

75679 PARIS Cedex 14

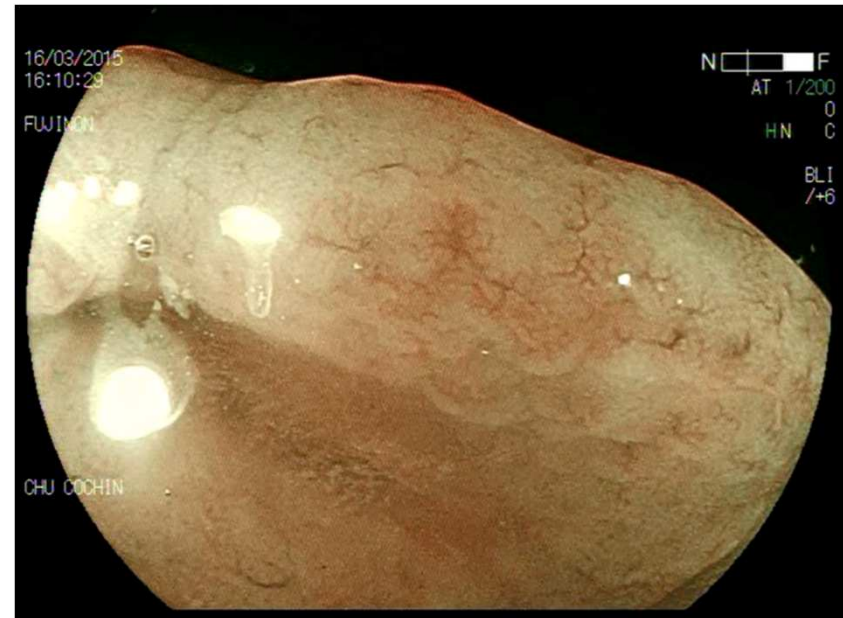
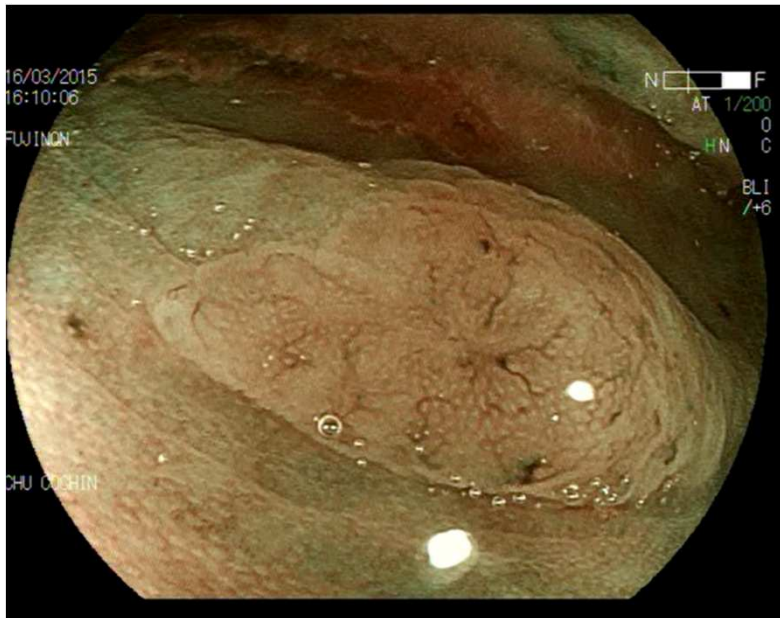
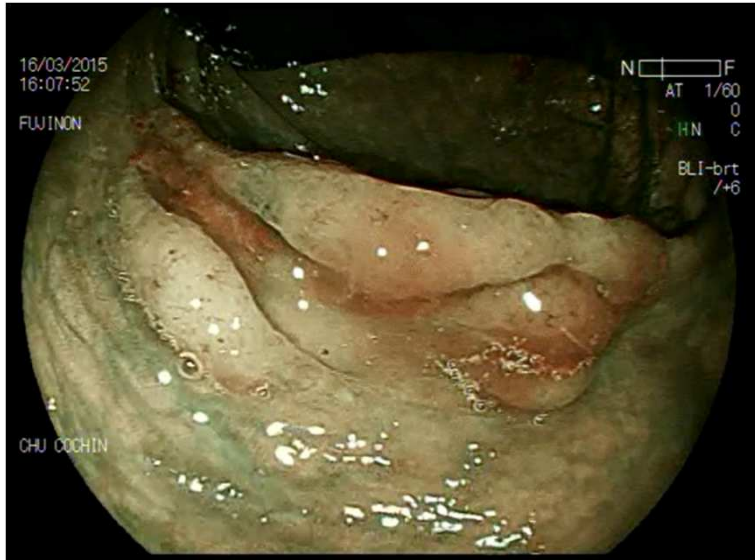
# Polype 1



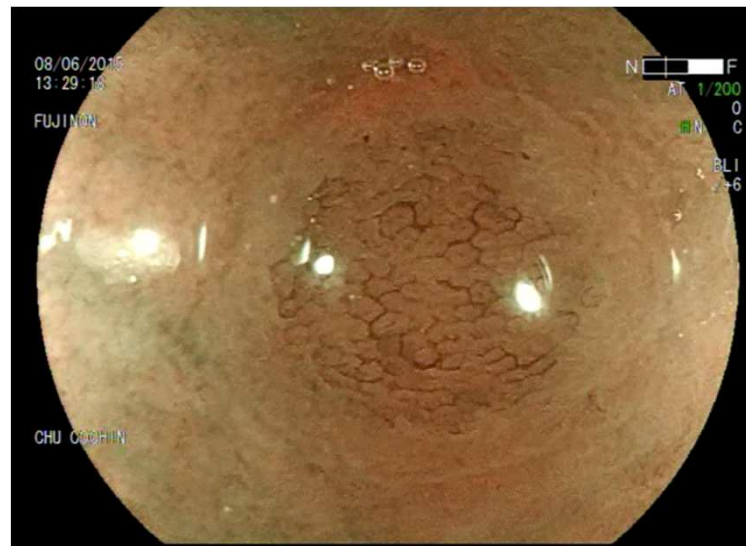
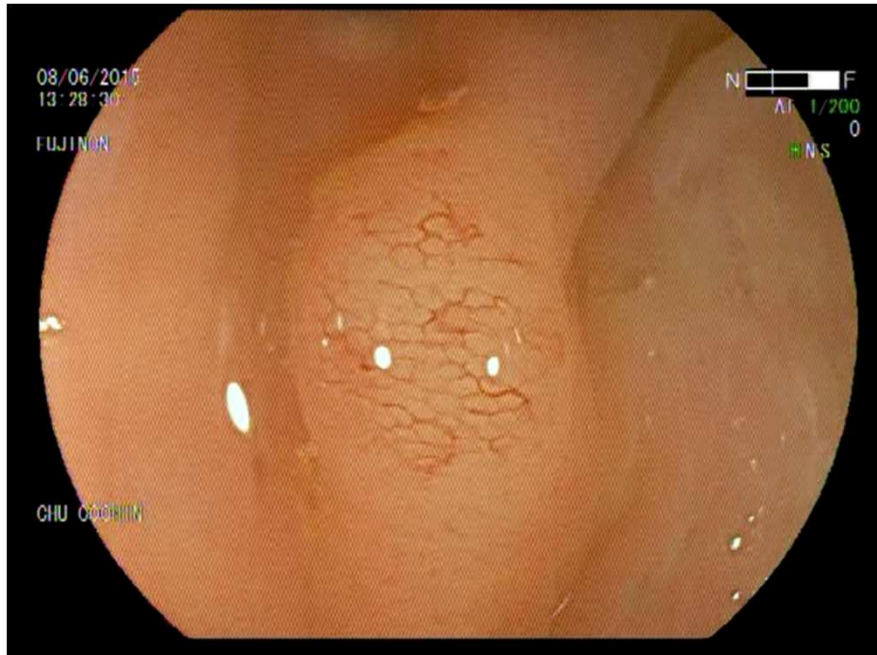
# Polype 2



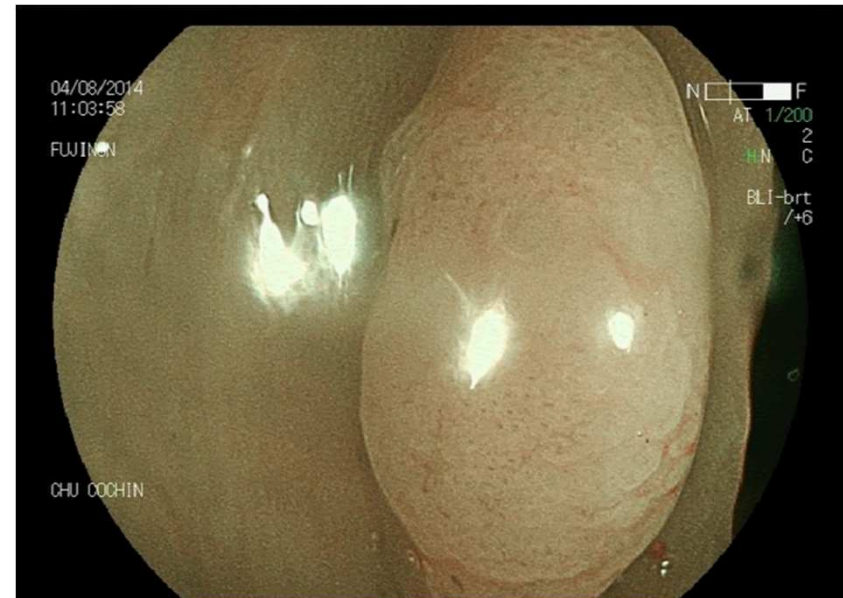
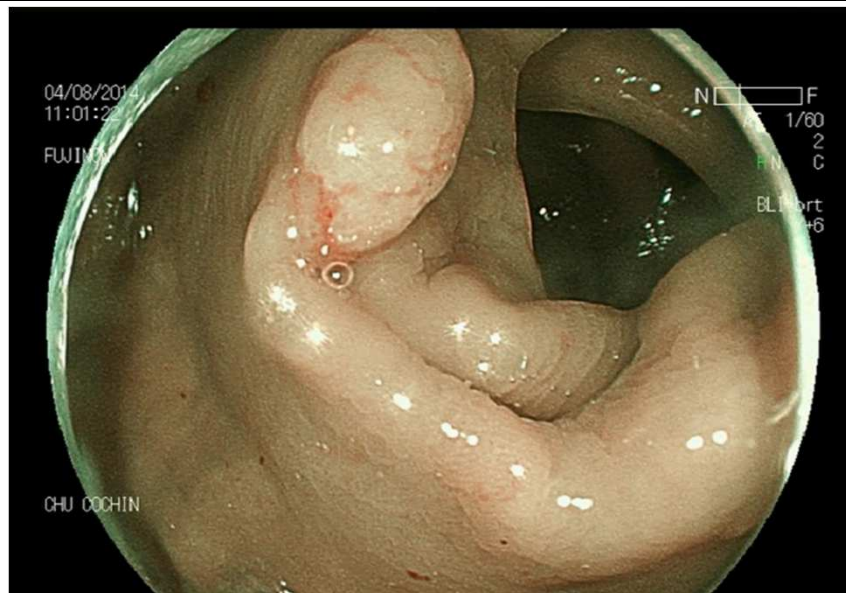
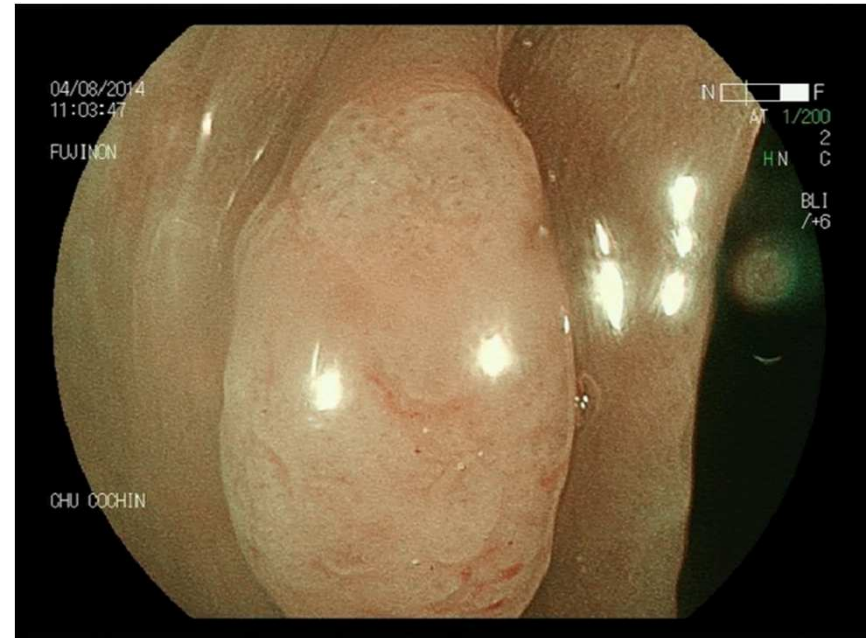
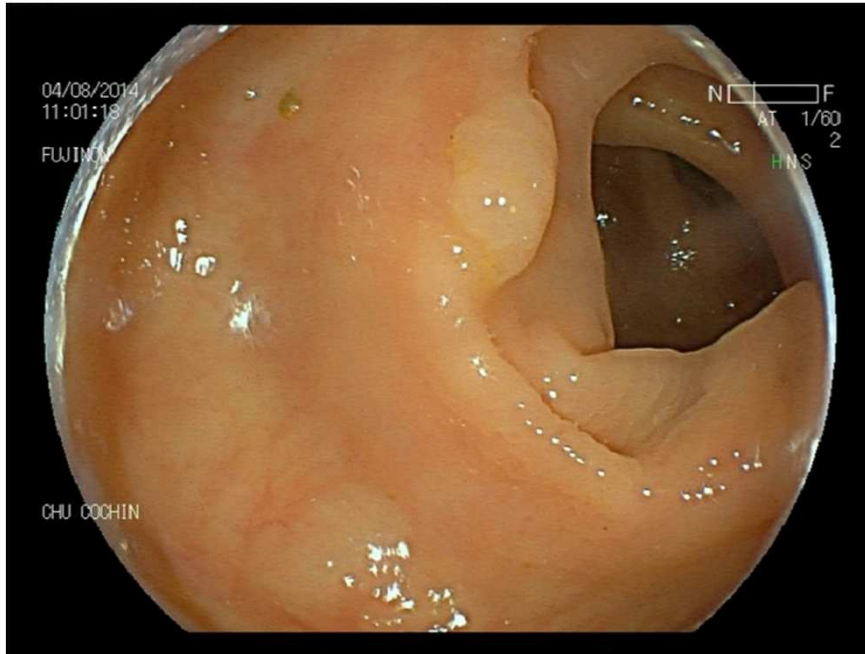
# Polype 3



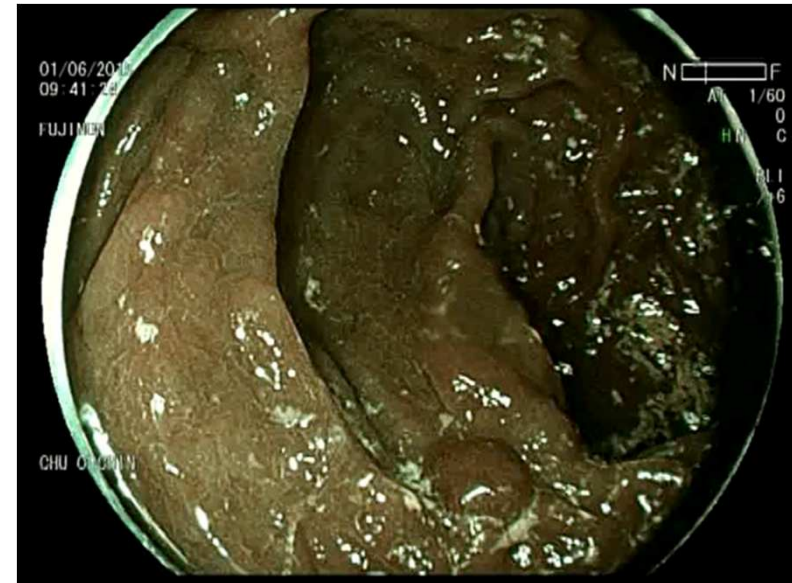
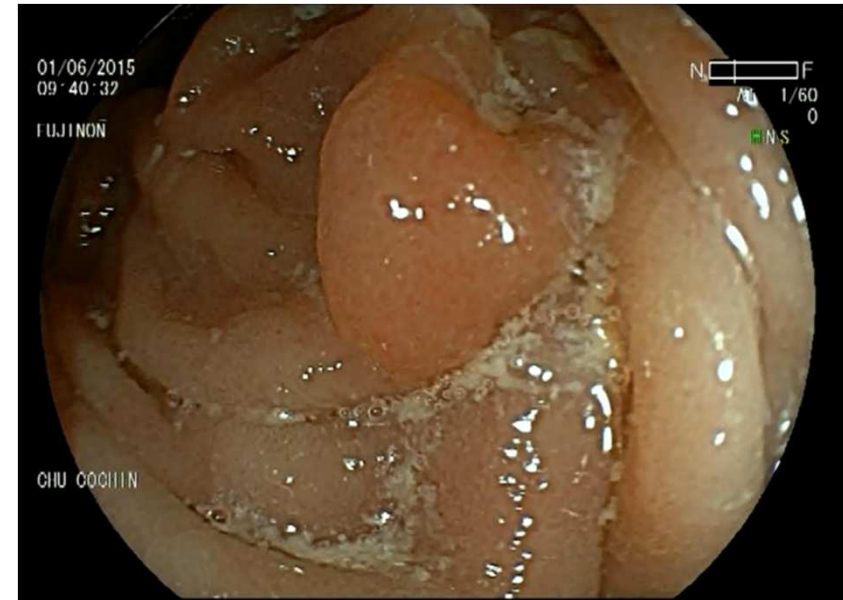
# Polype 4



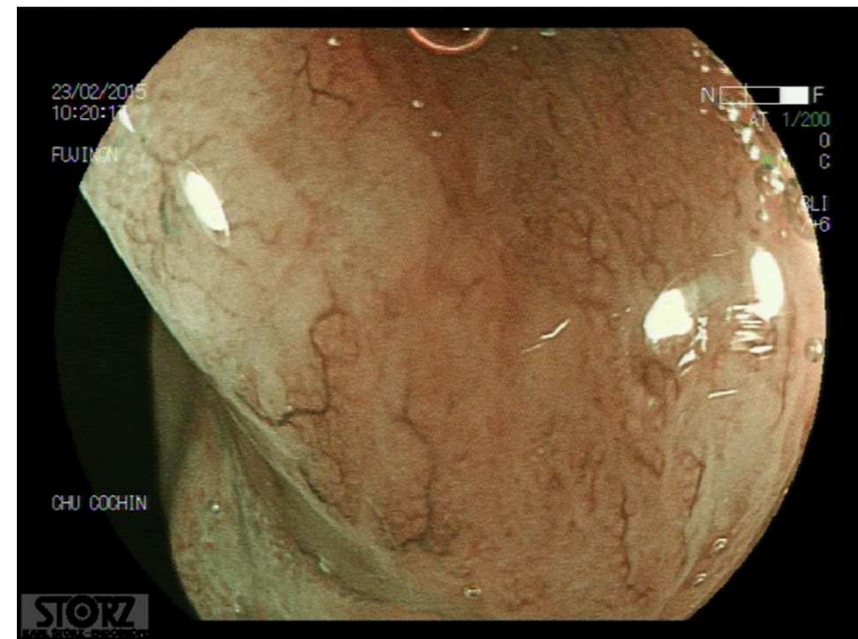
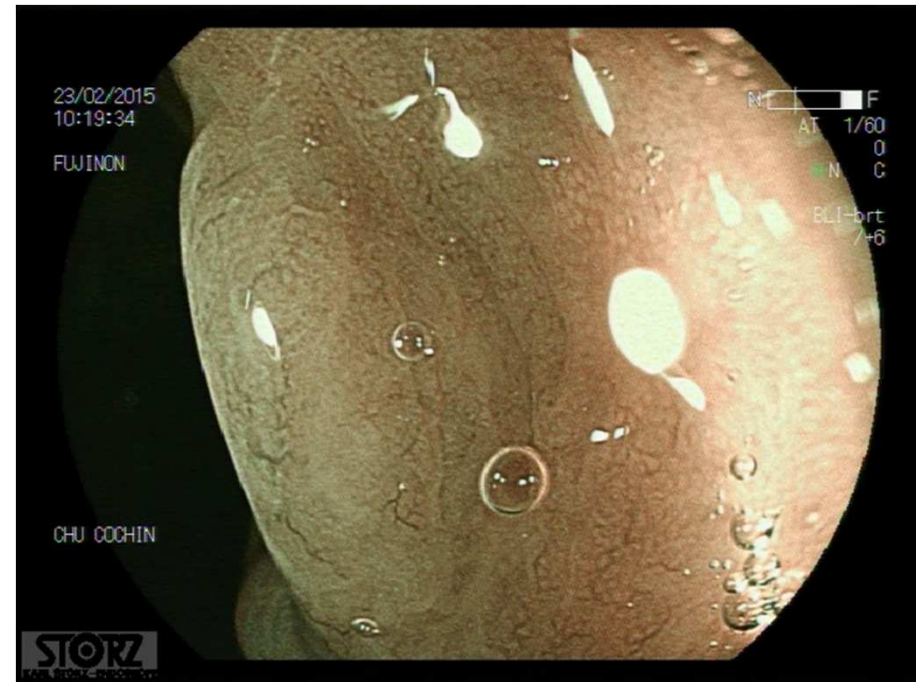
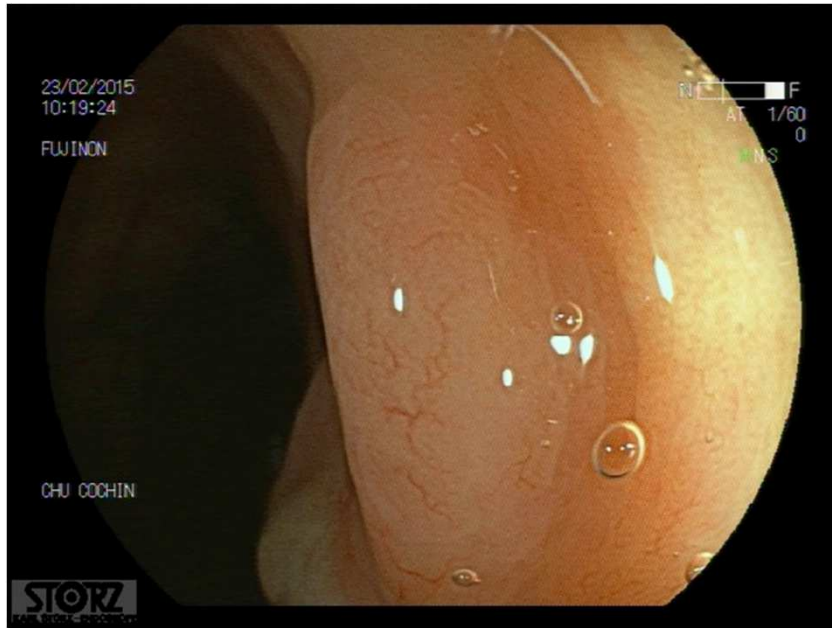
# Polype 5



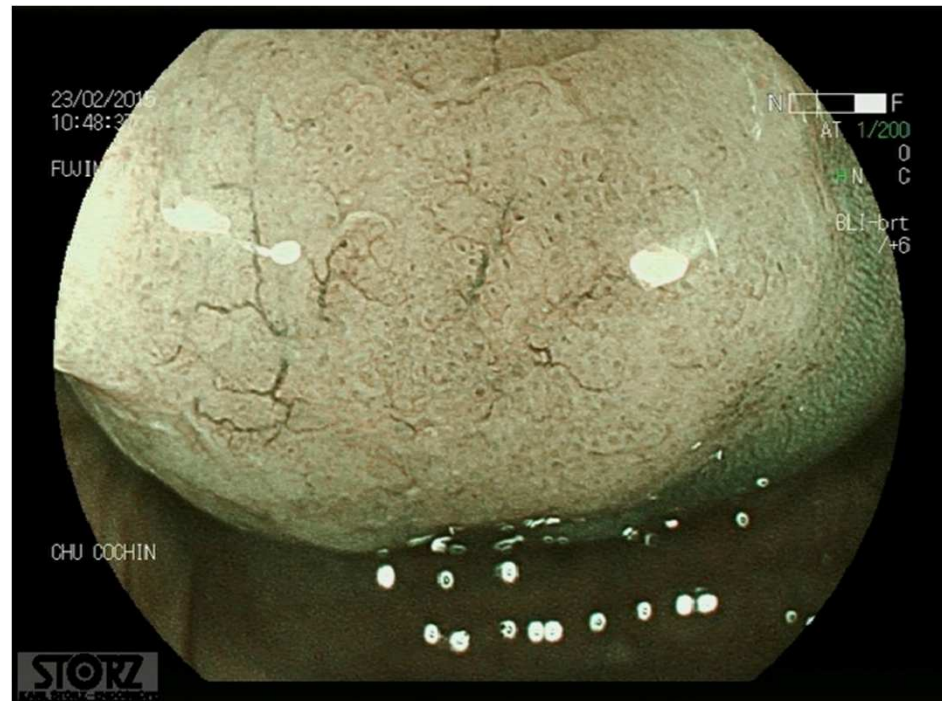
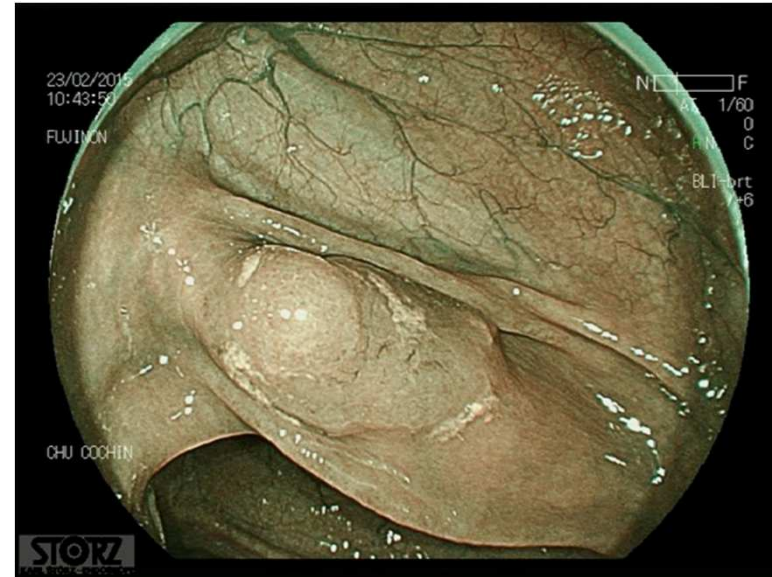
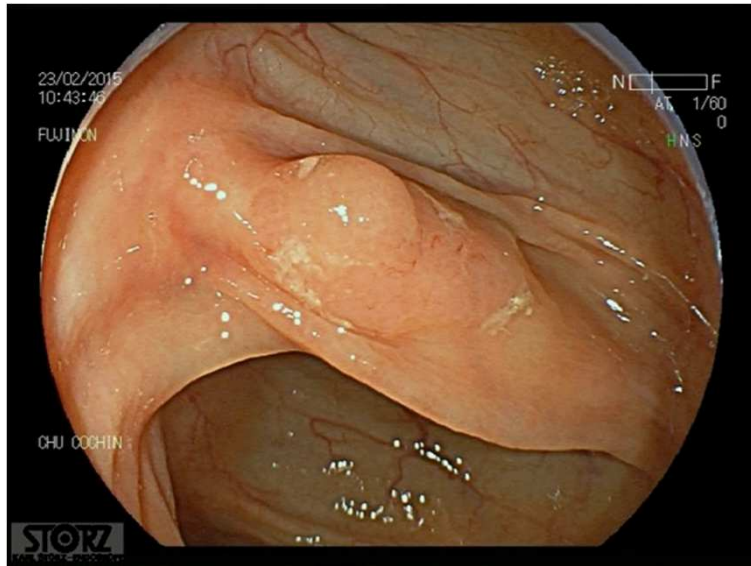
# Polype 6



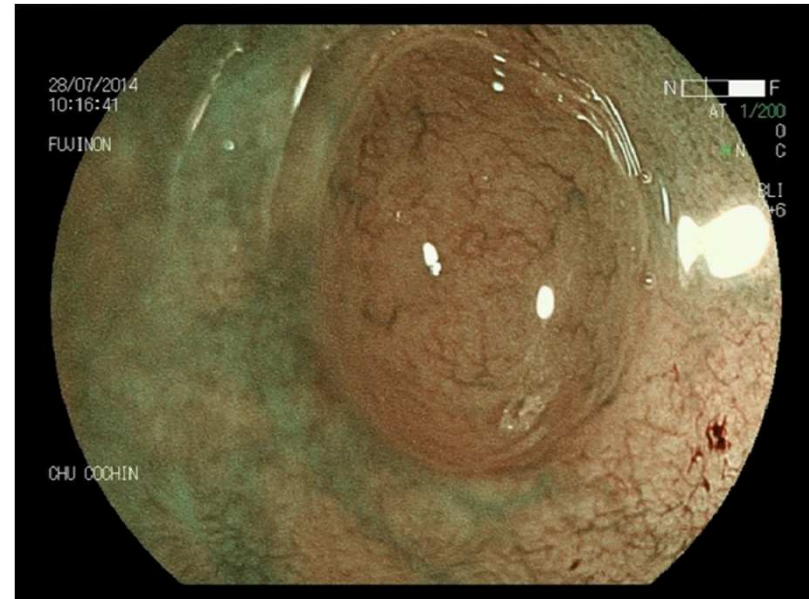
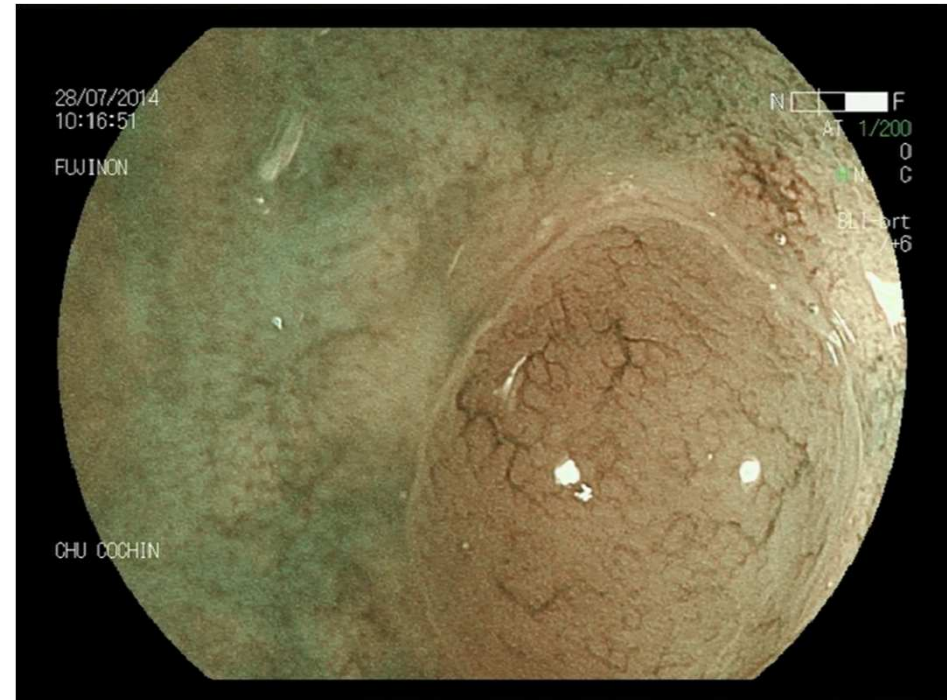
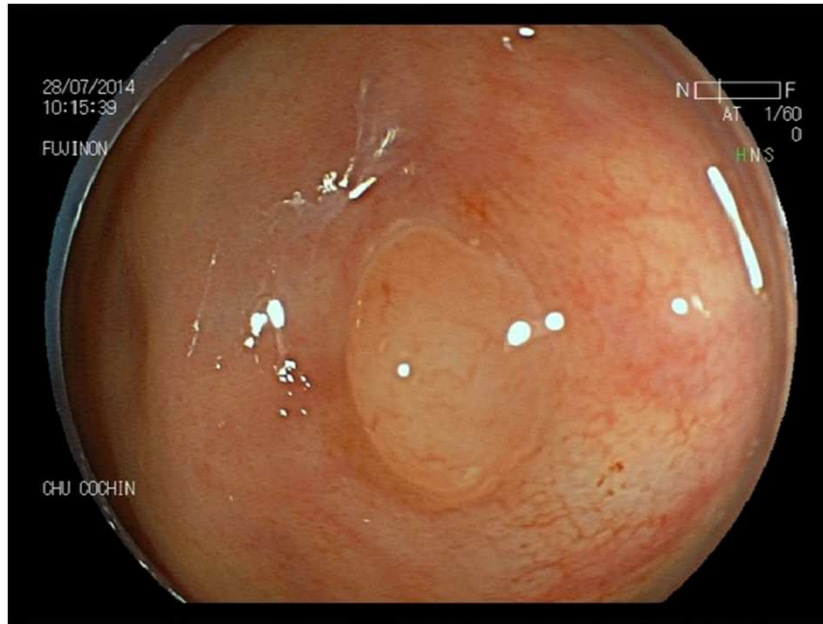
# Polype 7



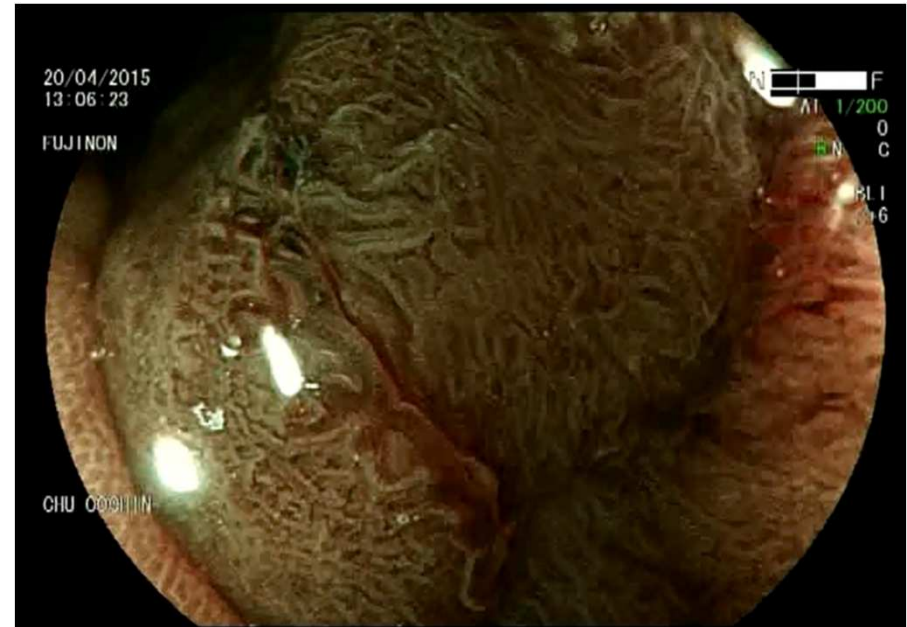
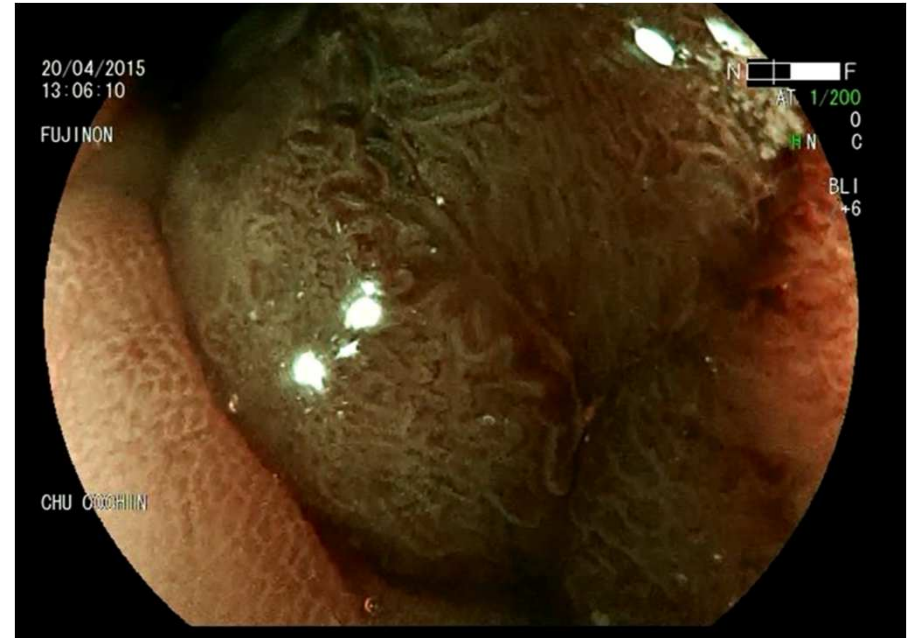
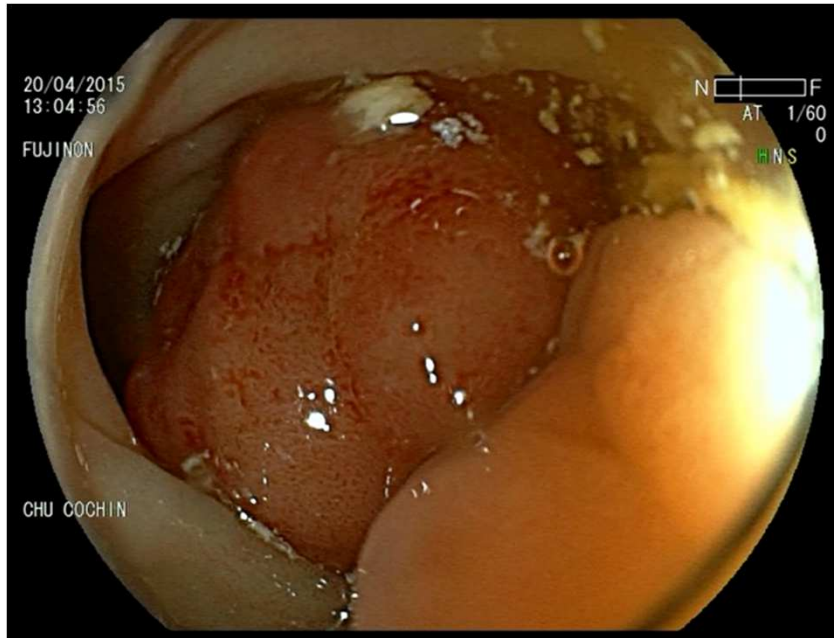
# Polype 8



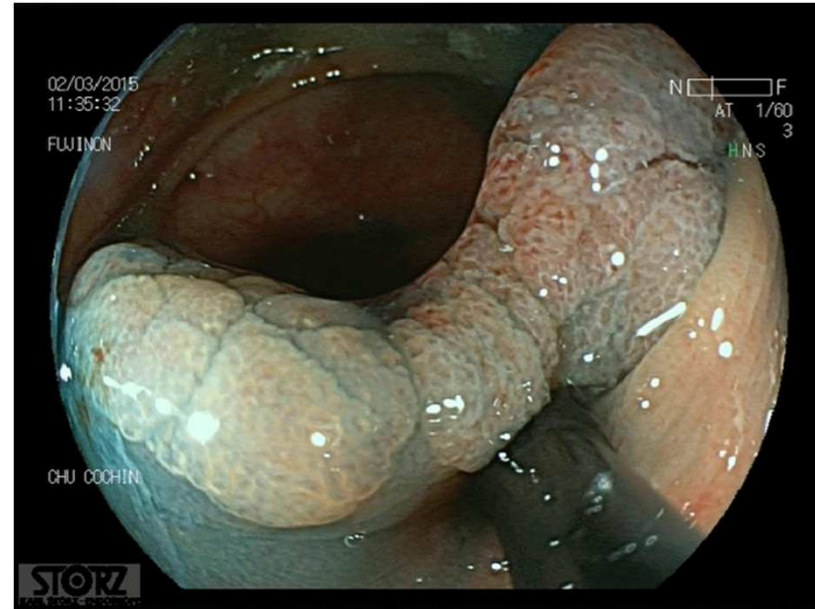
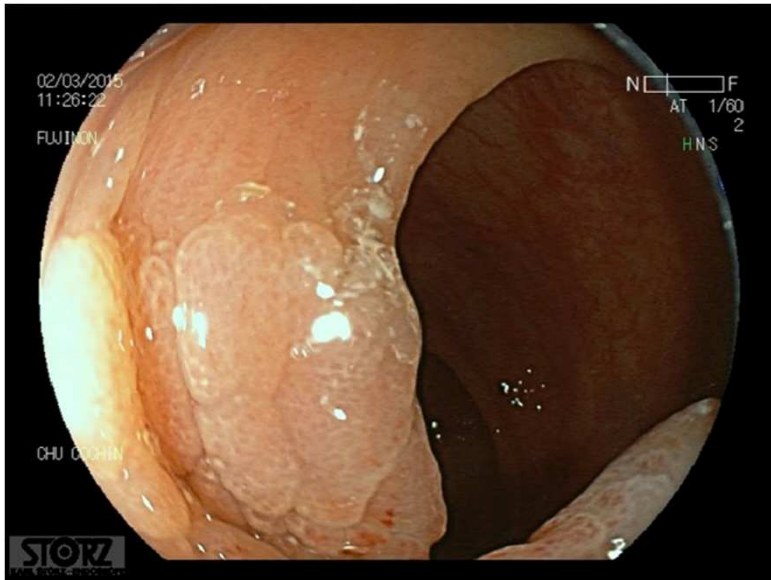
# Polype 9



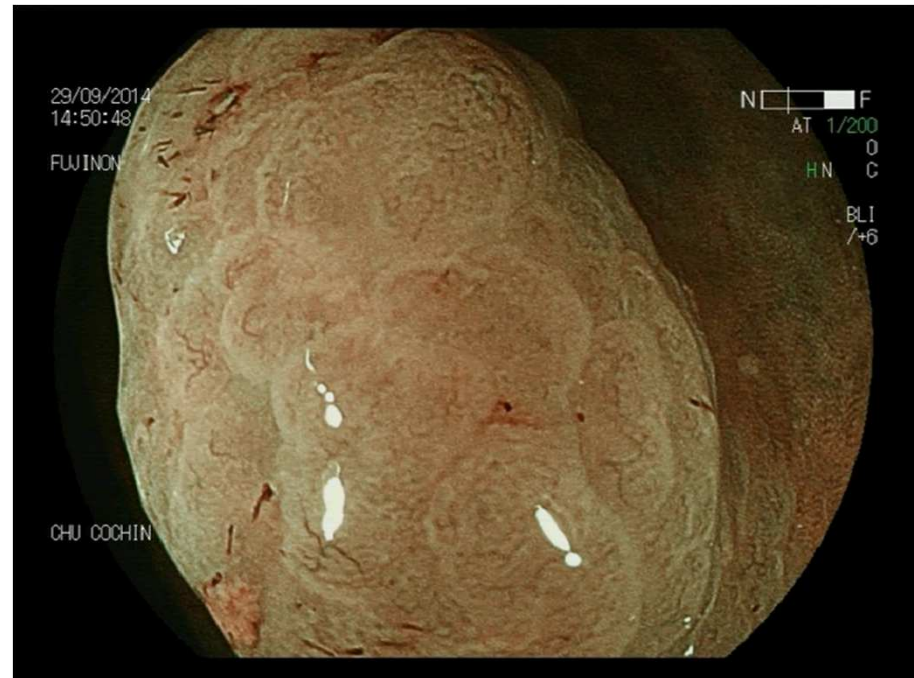
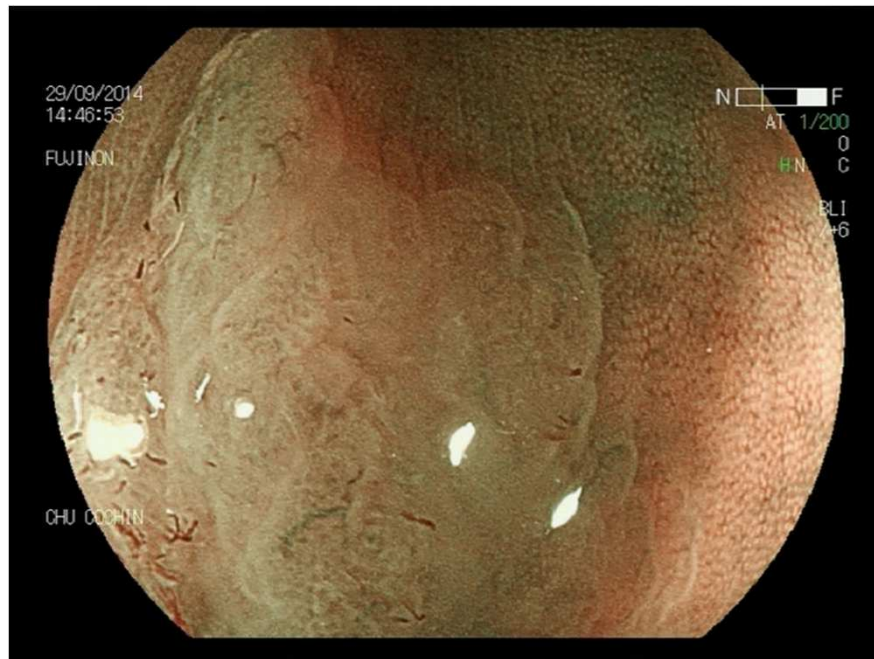
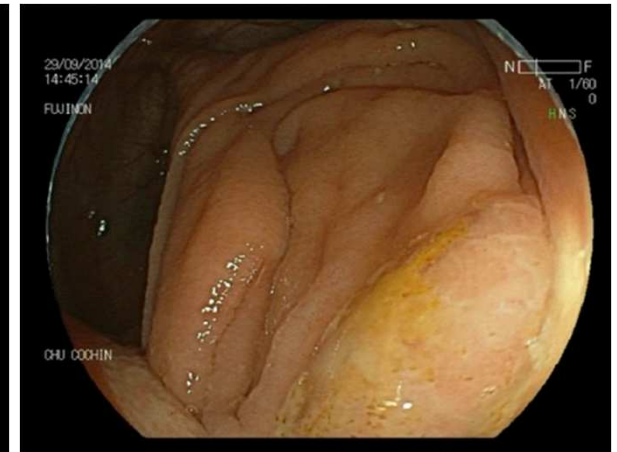
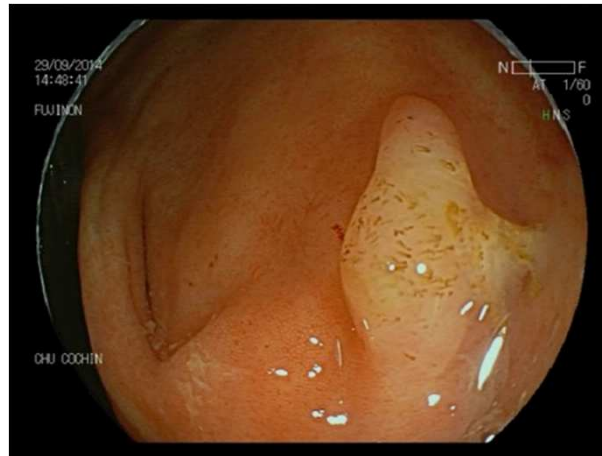
# Polype 10



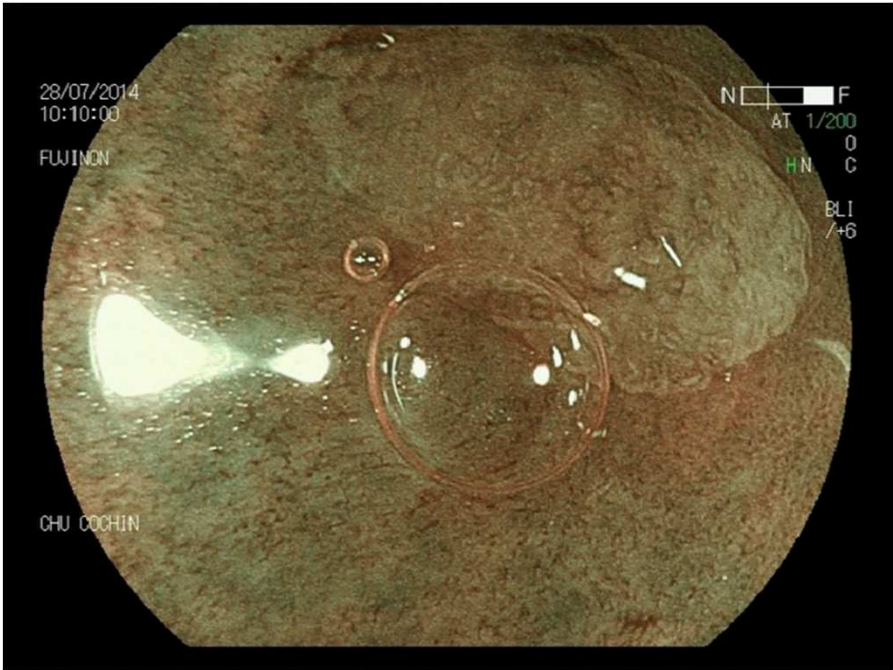
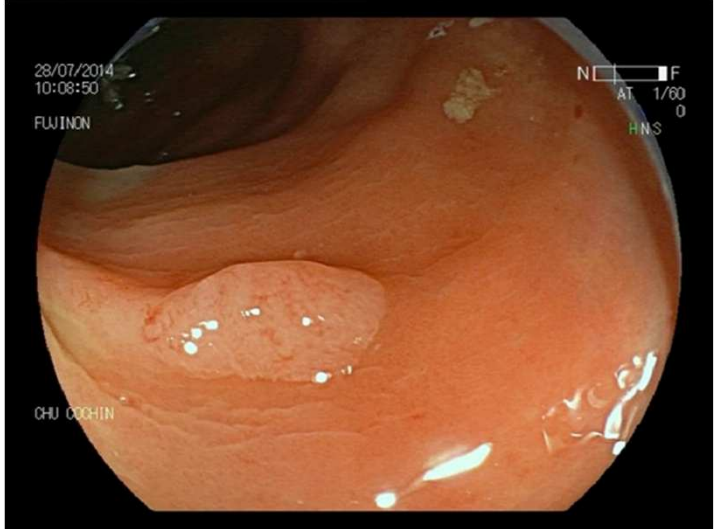
# Polype 11



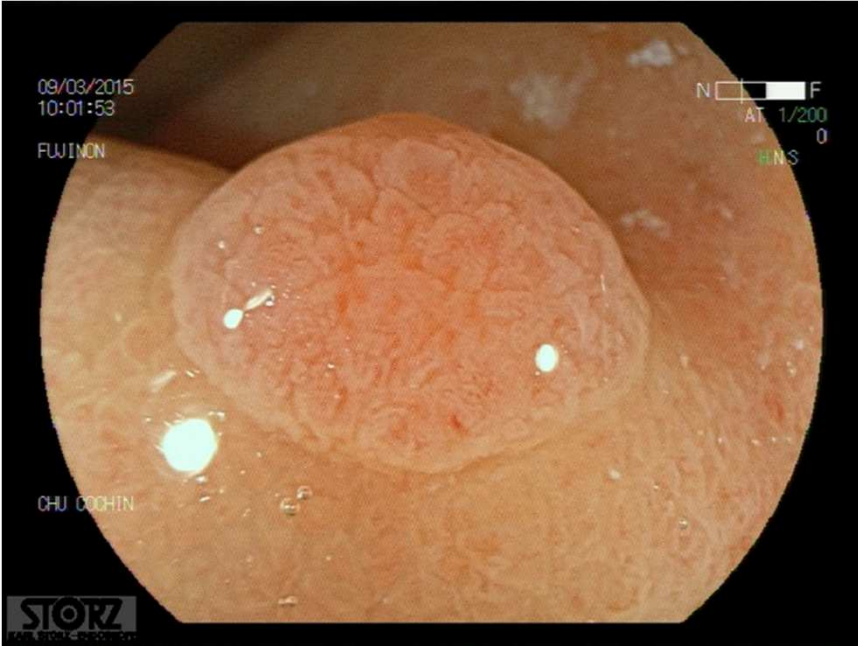
# Polype 12



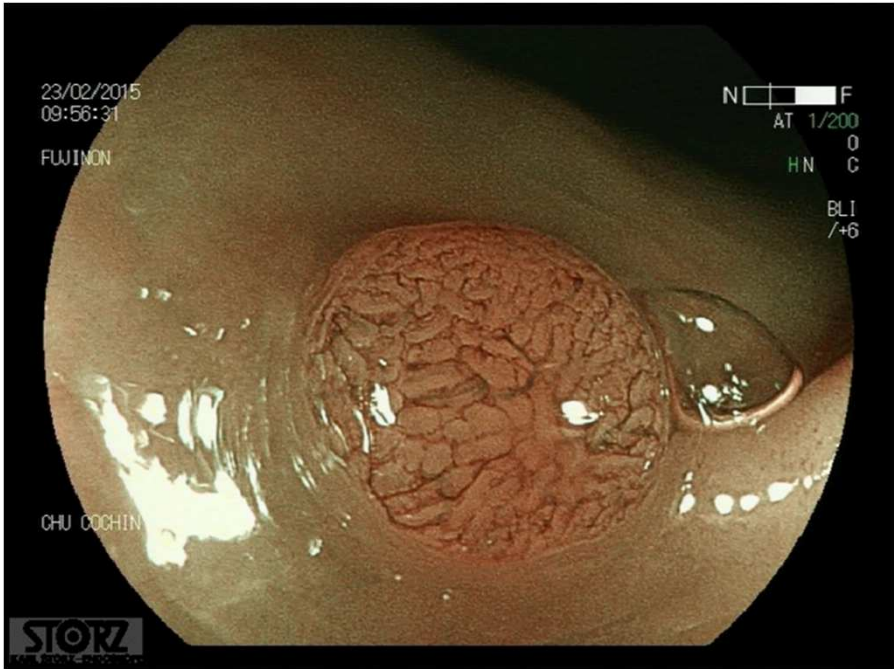
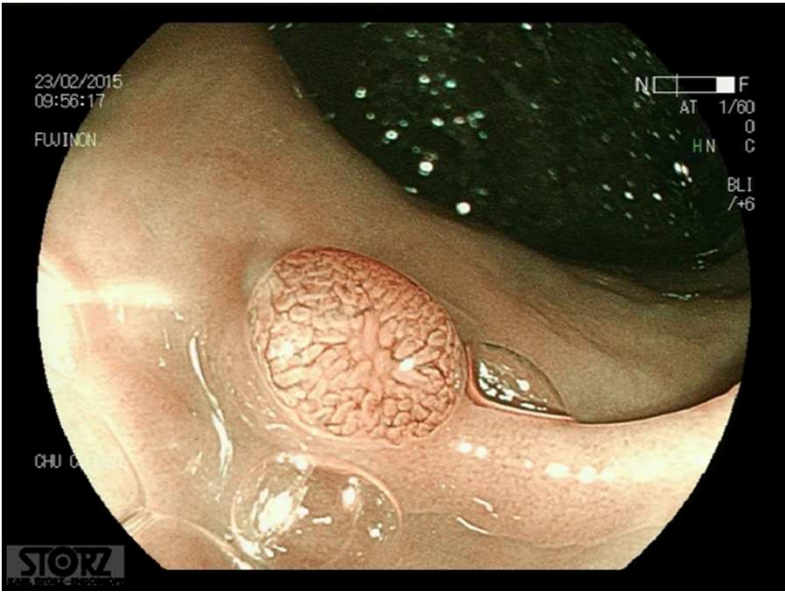
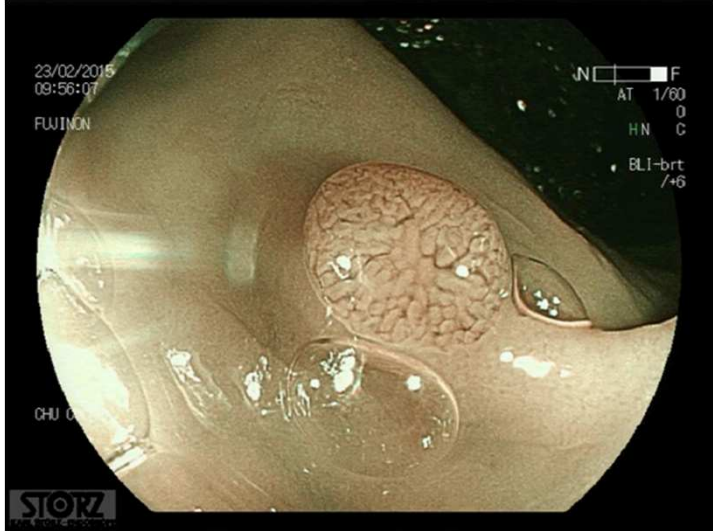
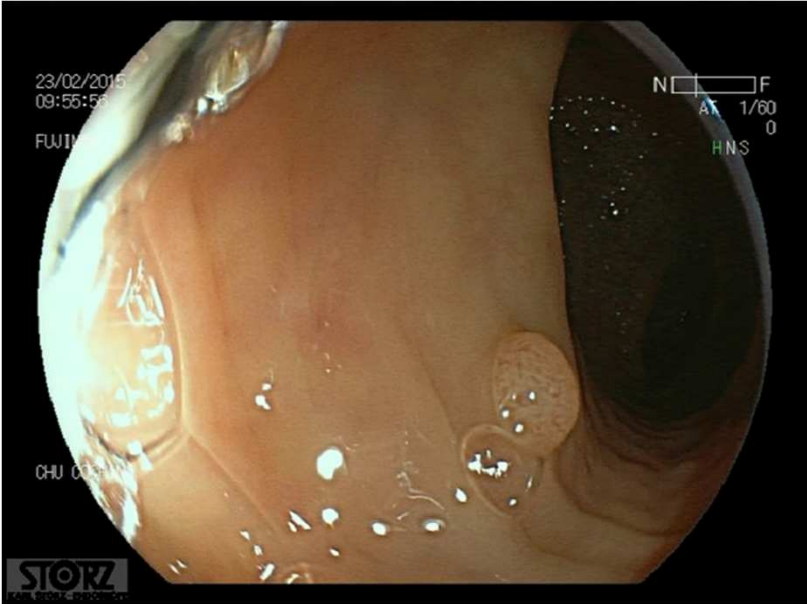
# Polype 13



# Polype 14



# Polype 15



## Correction

1. Polype 1: Polype sessile festonné sans dysplasie
2. Polype 2 : Adénome tubuleux en dysplasie de bas grade
3. Polype 3 : SSA
4. Polype 4 : Adénome tubuleux
5. Polype 5 : Polype hyperplasique
6. Polype 6 : Adénome tubuleux DBG
7. Polype 7 : Polype hyperplasique
8. Polype 8 : Polype sessile festonné sans dysplasie
9. Polype 9 : Polype hyperplasique
10. Polype 10 : Adénome tubulo-villeux en DHG
11. Polype 11 : Polype sessile festonné avec composante adénomateuse en DBG
12. Polype 12 : Polype sessile dentelé
13. Polype 13 : Polype hyperplasique
14. Polype 14 : Polype hyperplasique
15. Polype 15 : Adénome tubuleux en DBG